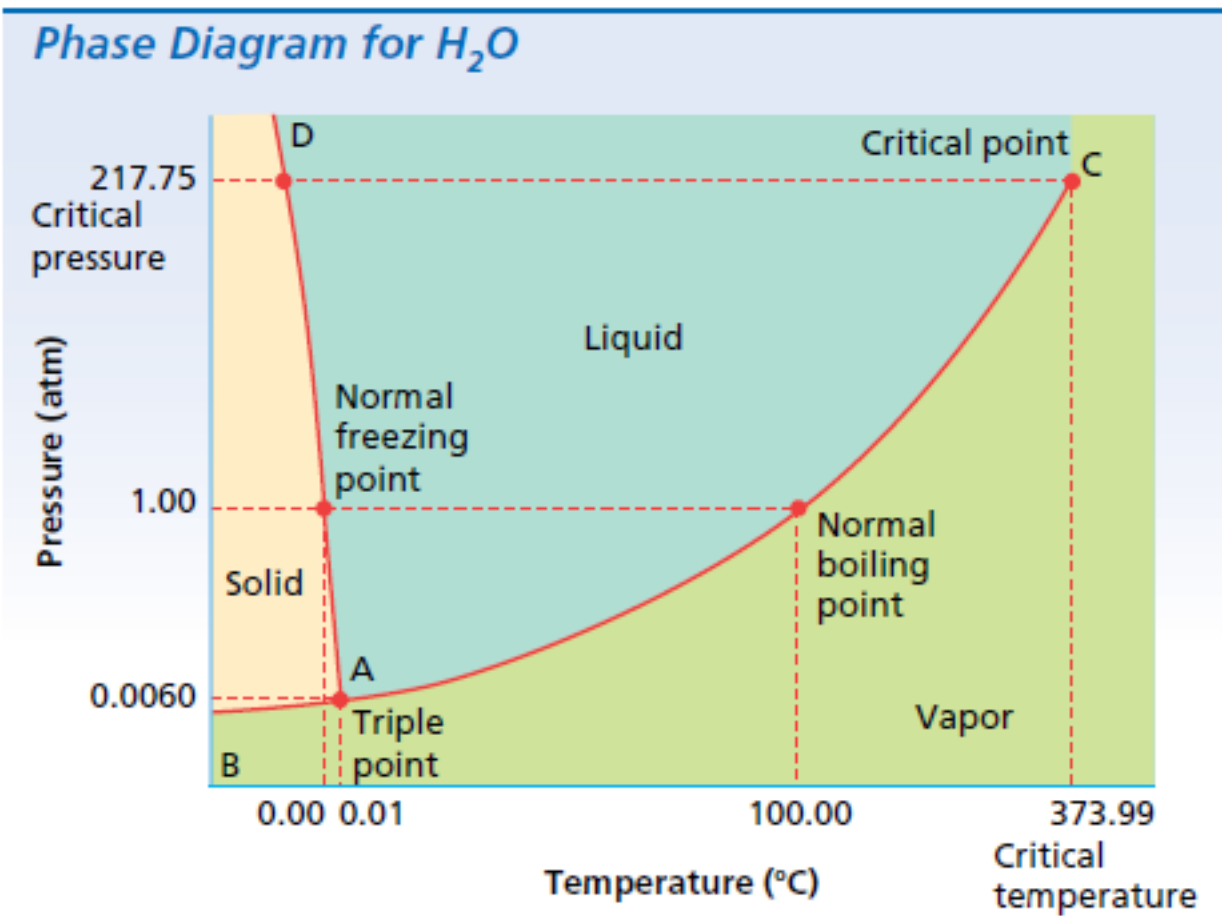


Same as Question #7 From Blue Modern Chem. Text Book



8. Refer to the phase diagram for water on page 381 to answer the following questions.
- Describe all the phase changes a sample of solid water would undergo when heated to its critical temperature at a pressure of 1.00 atm.
  - Describe all the phase changes a sample of water vapor would undergo when cooled to 5°C at a pressure of 1.00 atm.
  - At approximately what pressure will water be a vapor at 0°C?
  - Within what range of pressures will water be a liquid at temperatures above its normal boiling point?

**FIGURE 12-14** This phase diagram shows the relationships between the physical states of water and its pressure and temperature.